



Galway Educate Together National School (G.E.T.N.S.)

Per Cent for Art Commission

Stage One Brief & Application Form

Budget: €35,000

Deadline: 12 Noon, Friday September 20th, 2019

Introduction to School

Galway Educate Together National School (G.E.T.N.S.) is a multi denominational, co educational school operating under the Educate Together ethos. The school opened in 1998 in Corrib Village, moving to our current site in 2002, and has expanded ever since, culminating in our new extension which opened in September 2018. We have 430 pupils and 50 staff in our school. We are a thriving, busy, creative school that places an emphasis on quality inclusion, student voice and participation.

School Ethos

There are four main principles involved in Educate Together ethos

- We provide equality based education
- We are child centred
- We are democratically run
- We are co-educational.

Further information on the Educate Together ethos can be found at this link

<https://www.educatetogether.ie/about/overview/>

The selected Per Cent for Art Commission for G.E.T.N.S. will have to reflect this ethos in a meaningful way.

Our Brief

During the academic year 2018-2019, G.E.T.N.S was selected to participate in the Creative Schools programme. As part of this process, extensive research was carried out on all aspects of the creative life of the school, and all children, parents and staff had an opportunity to share their thoughts on how to foster a creative environment for the children in our school. The results of these surveys have informed our brief for the Per Cent for Art scheme, and five main requirements for the submission are outlined below:

- For the Creative Process to be transparent
- To be participatory in nature

- To involve the outdoor school environment
- To be a celebratory process
- To have external engagement

Aims for G.E.T.N.S commission under the Per Cent for Art Scheme:

- To leave a legacy that can be appreciated by the next generation of children.
- To consider the outdoor school environment in an interactive, accessible and participatory way with an element of tactility.
- To involve the children creatively in developing the project as appropriate.

Locations

Please see attached to this document, photographs of the school building (original and new extension), the school grounds, and a map of the school grounds. If selected for Stage 2 of the process, a mandatory site visit will be facilitated.

Participation

Participation from a number of student groups is required as part of the commission. This participation may involve students contributing directly to the artwork in some way. Alternatively the artist may devise a separate complementary workshop/strand which engages students in themes or approaches relating to the commissioned artwork. Artists will be required at Stage Two to describe the approach that they will take to participation and the rationale behind it.

Commission Information

Galway Educate Together National School invites proposals for the commission of an Artwork / Artworks to be funded under the Per Cent for Art Scheme in connection with Galway Educate Together National School, Thomas Hynes Road, Newcastle, Galway.

Artists are invited to tender for the project in a two-stage process outlined in this brief. Proposals are welcome from both individuals and collectives, and from those working in any creative

media / discipline and across a broad scope of creative approaches. The successful artist(s) will be commissioned in January 2020 and the commission is to be complete by September 2020.

Budget

The overall budget for this commission is €35,000 including V.A.T. This includes all costs related to the project / artwork(s), materials, artist's fees, workshops, insurance, travel and other expenses incurred in the production of the project / artwork(s). The artist will be responsible for meeting all of these costs out of the total budget allocated.

The Commissioning Process

Stage One

Artists are invited to express their interest in being considered for this commission. They may do so by completing the attached Expression of Interest Form and by supplying additional support materials outlined below:

- C.V.
- Examples of recent or relevant work / projects in whatever form is most appropriate.
Please label all files / images accurately and provide a documentation list describing the work in terms of materials, process, context etc.

Applications must be submitted in digital form, either by email to artstogethergalway@gmail.com or via Wetransfer or provided on CD/memory stick via post to the address below. If applicable to your practice / application, additional hard copy material may also be posted to arrive before the deadline. Please ensure that such hard copy material is accurately labeled and include a stamped self-addressed envelope if materials are to be returned. Please do not send original artworks.

The closing date for receipt of Stage One completed application forms together with supporting documentation and materials is 12pm on Friday, 20th September 2019

Applications received after the closing date and time will not be accepted.

For queries and further information contact:

Sineád Ní Bhrádaigh, Galway Educate Together National School, Newcastle Road, Galway.

Tel: (091) 583065

E-Mail: sineadnibgetns@gmail.com

Stage Two

From Stage 1 applications, a shortlist of artists will be selected by a panel jury. This panel, whose decision is final, has the right to clarify any issues which may arise in the course of selection. Shortlisted artists will be provided with a concept development fee of €300 to support them in undertaking a mandatory site visit and developing a detailed proposal for Stage Two. Artists selected to proceed to Stage Two may be provided with a more detailed brief outlining submission requirements. The award of the commission will be made following receipt of the Stage 2 applications.

The commissioned artist will be expected to complete Garda Vetting and must provide the following:

- Tax clearance certificate and/or artist exemption certificate
- Evidence of appropriate insurance

Please note that G.E.T.N.S. reserves the right to commission at Stage One, or to shortlist for the Stage Two process, or indeed not to commission from entries received and to re-advertise, direct invite, direct commission or to select more than one artist / collective and to divide the budget.

Selection Panel

The selection panel will consist of members of the Public Art Committee including members of G.E.T.N.S. staff, parents, children's representatives, and at least two professional artists / arts managers.

Criteria for Selection

- Relevance to the spirit, ethos, history and cultural context of G.E.T.N.S.
- Potential of the proposed project / artwork to have an enduring legacy
- Artistic merit of proposed artwork / project
- Quality, clarity and practicality of proposal
- Innovation of concept / proposal / idea
- Integration of project with the school building, community and / or environment
- Potential of the proposed project / artwork to meaningfully engage the whole school community
- Ability to carry out the project
- Ability to work with a professional brief within a specific time-frame
- Feasibility of delivering the commission within the proposed budget
- Durability and implications for future maintenance where appropriate

Timeline

September 2019 - Deadline for Stage 1 Submissions

Early October 2019 - Selection panel will shortlist a number of artists to proceed to Stage 2

Mid October 2019 - (Mandatory) site visit for shortlisted artists.

End November 2019 - Deadline for Stage 2 Submissions

December 2019 - Selection panel meet and selected artist is commissioned.

January 2020 - Commencement of commission.

September 2020 - Deadline for completion of commission

Equal opportunities

Galway Educate Together NS respects, values and accommodates diversity across all nine grounds in the equality legislation.

Images of the School

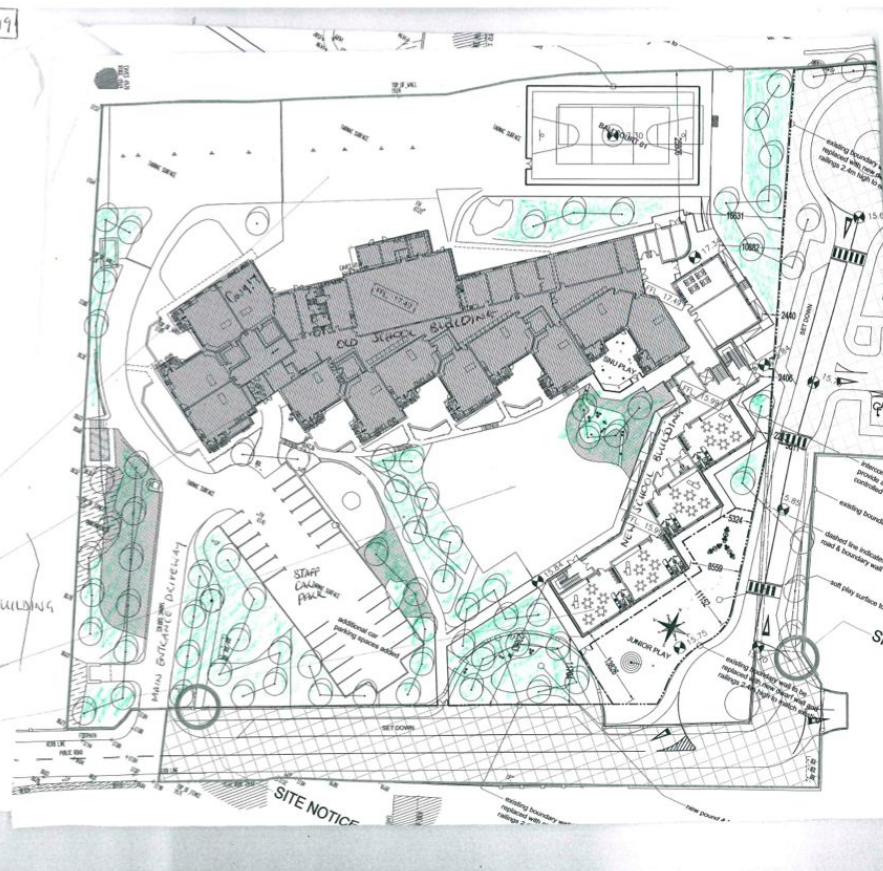
Map of the school grounds

PER CENT FOR ACT @ C.E.T.N.S JUNE 2019

MAP OF SCHOOL GROUNDS:

* PLEASE NOTE → THE AREAS SHADED GREEN ARE CURRENTLY WILD BUT ARE DUE TO BE LANDSCAPED IN AUTUMN 2019.

YARD / PLAY AREA
MAIN ENTRANCE /
ENTRANCE TO OLD SCHOOL BUILDING
GREEN OPEN SPACE TO
THE FRONT OF THE SCHOOL
NEW SCHOOL BUILDING



* Please note, the areas shaded in green on the above map are currently wild, but are due to be landscaped in Autumn 2019.

View of car park opposite the school entrance at the new building



New school building





Soft surface area outside Junior and Senior Infants







The older school building





Original school garden area





Wild flowers growing between the old school building and playground



Playground





Older school building interior







New school building interior





Downstairs to Junior and Senior Infants

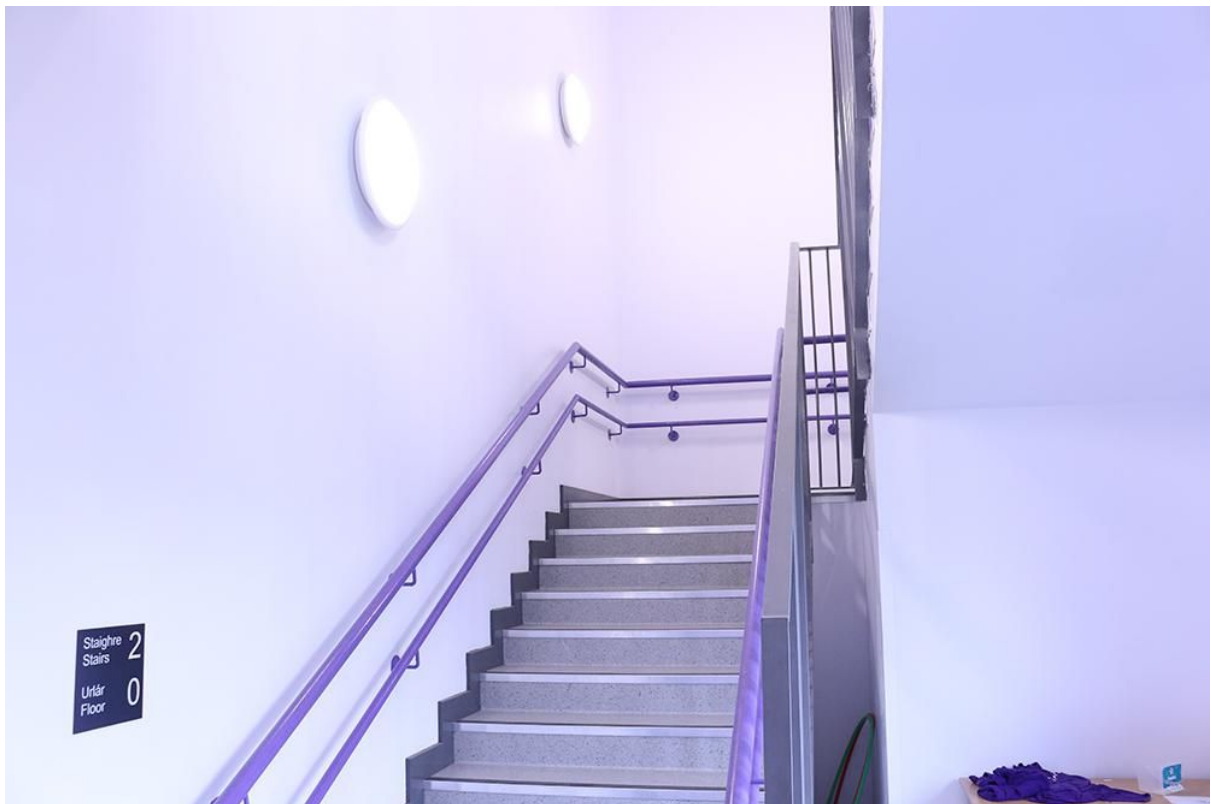








Upstairs to 5th, 6th classes and After-school rooms.





View of stairs leading to a fire exit on the left

